



### Series CS—Industrial spline



#### Advantages

- Sensitive response
- Compact profile
- Low cost
- Angular lash 0° 30' max
- Coefficient of friction 0.005
- Predictable life

Industrial splineways are recommended for applications combining conditions of torque transmittal or restraint where minimum angular lash and low resistance of linear motion are required.

#### Rated torque for given travel (lb. in.)

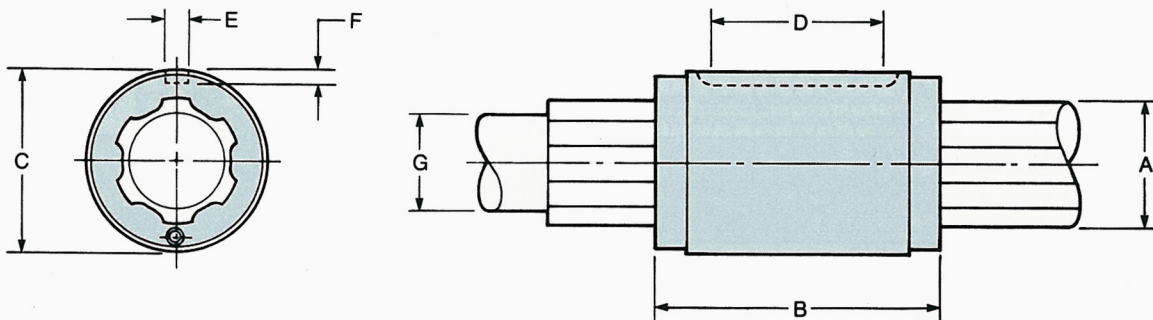
Model No.	10 <sup>6</sup> Inches	10 <sup>7</sup> Inches	10 <sup>8</sup> Inches	Static Torque (lb-ins)
CS-0750	547	254	118	1,730
CS-1000	1,260	586	272	3,612
CS-1500	4,286	1,990	924	10,743

#### Angular Lash

Angular lash between the inner and outer races of the Beaver standard ball bearing splineway units is controlled to a maximum value of 0° 30'. The precision units can be offered with zero lash or preload to minimize deflection under load **without loss of rated torque capacity.**

#### Custom capability

To accommodate non-standard applications, Beaver offers a complete engineering service that will be able to answer your questions on modification of the standard offering to suit your needs, such as; special materials, finishes etc. Or, Beaver can work with your to design a custom device for your special requirements.



Model No.	A Inner Race Diameter	B Outer Race Length	C Outer Race Diameter	D Keyway Effective Length	E Keyway Width	F Keyway Depth	G Maximum Diameter Available	Maximum Standard Length
CS-0750	.750	2.060	$\frac{1.1875}{1.1870}$	1.000	$\frac{.188}{.185}$	$\frac{.078}{.068}$	$\frac{.625}{.624}$	120
CS-1000	1.000	2.590	$\frac{1.625}{1.624}$	1.250	$\frac{.251}{.248}$	$\frac{.113}{.103}$	$\frac{.812}{.811}$	120
CS-1500	1.500	3.720	$\frac{2.156}{2.155}$	2.000	$\frac{.313}{.310}$	$\frac{.140}{.130}$	$\frac{1.250}{1.249}$	120